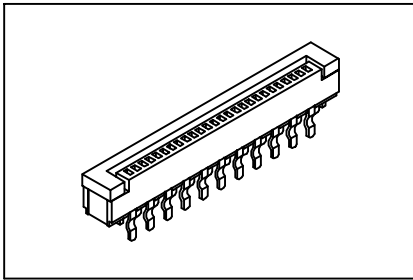


FFC/FPC Connector 1.0mm(0.039") ZIF Type

GXCON



Material:

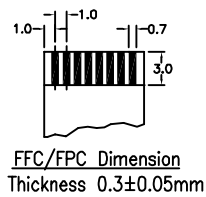
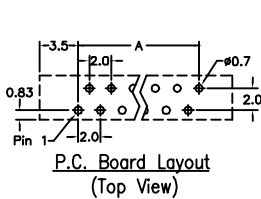
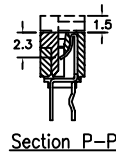
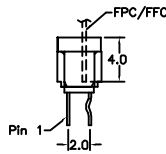
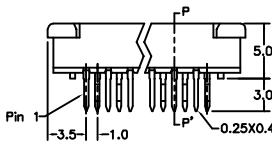
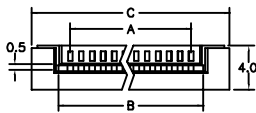
Housing: High temperature housing UL94V-0 withstands IR and VPR soldering methods.
Contacts: Phosphor Bronze.
Leg: Brass.
Plating: Tin plated.

Electrical Characteristics:

Current Rating: 0.5 AMP.
Insulator Resistance: 100MΩmin. at DC 500V.
Contact Resistance: 20mΩmax. at DC 100mA.
Operating Temperature: -55°C~+85°C.

Features:

- * ZIF, Straight dip type.
- * Size 4 through 32 available.
- * For 0.30mm(0.0118") thick FFC/FPC.



FFC/FPC Dimension
Thickness 0.3±0.05mm

Position	4 Thru 32
Dimension	
A	(No. of Positions X 1.0)-1.0
B	(No. of Positions X 1.0)+1.2
C	(No. of Positions X 1.0)+6.0

Ordering information

FC12- 32 2 1
 Series No. of Pin Count 2: Tin Plated 1: Straight